



INDEX IS  
LINKED TO PAGES.  
SMALL SCVWS LOGO  
AT TOP OF EACH  
PAGE BRINGS YOU  
BACK HERE.

## PRESIDENT'S MESSAGE

1

CALENDAR  
& SPOTLIGHT

2

EXHIBITS

3

IG CHALLENGE

4

WORKSHOPS

5-8

MEMBER NEWS

9-10

JURIED SHOWS

11

PAINTSITES

12-13

MEMBER ARTICLE  
& EDUCATION

14-15



## President's Message



Happy Halloween!

Most of you won't be dressing up in costumes...or maybe you will... either way, it's a fun time of year! Personally, I will be donning a costume for my youngest granddaughter's 1st birthday party. Her costume is "Baby Shark" - you know the song...so I guess, I'm Gramma Shark?

Our reception for the California Color exhibit at the Saratoga Library was spectacular. This was the first time the Library allowed a reception and we knocked it out of the park! Susan Butler-Graham gave a presentation for the public and it was packed! Karen Fitt gave out goodie bags filled with treats and a big thanks to our volunteers who helped out at the event. The turnout may have been larger than our annual show reception. We rock!

On an art-related note, I read an Instagram post by Brenda Swenson where she asks the question "Do you consider a watercolor sketch fine art?" She went on to list the definition of "fine art" in which a sketch definitely qualifies, even if it is not considered a "finished painting." Would our plein air painters say that their work done outdoors is NOT fine art? Brenda asked this question as she pointed out that watercolors in general are often considered a lesser medium in the eyes of galleries, collectors, etc. Yet on the flip side, so many people say it is the most difficult medium to learn and master. So, what's the deal, and why isn't it valued more? Brenda went on to say she is not looking to change the world, but hopes that her post will bring a greater awareness of the value of watercolor to the art world and beyond. There were many comments from those who read the post and many concurred with her. I found it to be a very interesting and thought-provoking question. What do you think?

We have only one workshop remaining for the year with Carrie Waller. I hope you will consider attending. She is a fabulous artist as many of you saw from her demo.

Have a Spooktacular month!

Susan Jochheim

## calendar

THU	OCTOBER 5	Paintsite: Guglielmo Winery, Morgan Hill
THU	OCTOBER 12	Paintsite: Queens Pumpkin Patch, Saratoga
M-W	OCTOBER 16-18	<b>WORKSHOP:</b> Carrie Waller
THU	OCTOBER 19	Paintsite: Spina Farms, San Jose
THU	OCTOBER 26	Paintsite: Wunderlich County Park, Woodside

MEMBERSHIP  
INQUIRIES
[membership@scvws.org](mailto:membership@scvws.org)

ANNUAL DUES ARE \$30

BECOME  
A MEMBER

PLEASE CHECK THE SCVWS CALENDAR OF EVENTS AND THE PAINTSITES WEB PAGE FOR LAST MINUTE UPDATES.

## spotlight



## Trevor Waugh

Trevor was born in 1952 and grew up in London. He studied at The Slade School of Fine Art from 1970-74 (BA) under the guidance of Sir William Coldstream, Professor of The Slade at the time, Patrick George, Philip Sutton, David Hockney, Euan Uglow and Bernard Cohen. During his time at The Slade, he was invited by Sir William Coldstream and Patrick George to exhibit alongside them at The Collegiate Theatre at University College, London, 1971. He went on to work successfully as a freelance illustrator for nine years for most of the major publishers including Penguin, Heinemann, Cassell, Collins and the BBC. Trevor returned to fine art in 1988 and began travelling extensively in the Middle East. In 1995 Trevor travelled to the USA and resided there for three months to include an exhibition and watercolor classes at Cleveland State Community College, Tennessee. Trevor paints and exhibits at his Studio in Heywood, Wiltshire, UK. He also runs watercolor and oil painting classes in the UK and abroad. [website](#)

## scvws team

President	Susan Jochheim	<a href="mailto:president@scvws.org">president@scvws.org</a>
Finance	Jane Paulson	<a href="mailto:finance@scvws.org">finance@scvws.org</a>
Membership	Karen Smith	<a href="mailto:membership@scvws.org">membership@scvws.org</a>
Exhibits Chair	Susan Butler-Graham	<a href="mailto:exhibits@scvws.org">exhibits@scvws.org</a>
Recording Secretary	Kathy Dolan	<a href="mailto:secretary@scvws.org">secretary@scvws.org</a>
Workshops Chair	Vicki Wilson	<a href="mailto:workshopchairs@scvws.org">workshopchairs@scvws.org</a>
Hospitality	Karen Fitt	<a href="mailto:hospitality@scvws.org">hospitality@scvws.org</a>
Scholarship/Outreach	Karen Druker	<a href="mailto:scholarship@scvws.org">scholarship@scvws.org</a>
Publicity	Marika Anderson	<a href="mailto:publicity@scvws.org">publicity@scvws.org</a>
Paintsites	Jane Saltman, Alison Turner	<a href="mailto:paintsites@scvws.org">paintsites@scvws.org</a>
Webmaster	(vacant)	<a href="mailto:webmaster@scvws.org">webmaster@scvws.org</a>
Newsletter Design	Tanvi Buch	<a href="mailto:newsletter@scvws.org">newsletter@scvws.org</a>

## NEWSLETTER SUBMISSIONS

The deadline for each month's newsletter is the **15th** of the previous month (i.e. **the deadline for November submissions is October 15**). Content received **after the 15th** will be placed in the following month's newsletter.

**Send items by email to the editor** at [newsletter@scvws.org](mailto:newsletter@scvws.org). Please send **concisely-written** entries as text in an email or in a Word .doc exactly as you want them to appear. Images of artwork or supporting illustrations are required. Do **NOT** send PDF documents or other flyers of pre-formatted information. We may edit for space if necessary.

exhibits

## SCVWS FALL MEMBERS' SHOW

*California  
Color*

SEPTEMBER 1 - OCTOBER 31, 2023

AT THE SARATOGA LIBRARY

POPPIES IMAGE CREDIT: WES &amp; DOTTY WEBER

The SCVWS reception for the show "California Color" was held at the Saratoga Library on September 10, including a slideshow, drinks, and goodies. Thanks to all the volunteers who helped to make this first reception at the Saratoga Library go off so well. We could not have done it without you!

The exhibit runs until October 31. Take a look at the impressive art, try the scavenger hunt, and remember to vote for your favorite piece!







SCVWS Members  
October Instagram Muse Challenge  
**"Fall Into Color"**

Optional Challenge Booster - include a figure.



**What:**

Email a painting to [exhibits@scvws.org](mailto:exhibits@scvws.org) for the current month's theme, to be posted and displayed in the SCVWS Instagram gallery. See [www.scvws.org](http://www.scvws.org) Instagram Challenge page for info.



**Win a Prize:**

A monthly raffle will be held and a \$25 gift certificate will be awarded to one of the participants for that month.



View entries on SCVWS Instagram @scvalleywatercolorsociety, #scvwsoctober2023instagrammusechallenge



CLICK ON IMAGE FOR DETAILS

## RULES

- Submission dates: **October 1-31, 2023** (until noon on last day)
- Must be a member to participate
- Create a painting inspired by the current month's theme

## HOW TO SUBMIT

- .jpg file type only - at least 600 x 600 pixels (medium size)
- Ensure the image is clear & cropped - no mats in photo
- Email your image to [exhibits@scvws.org](mailto:exhibits@scvws.org)
- Email subject line: "SCVWS October Instagram Challenge"
- Email body: Type your name, title of piece, size & price
- Your Instagram handle: Include this if you have one.



## to our new members!

**Patti A Yukawa - Menlo Park, CA**  
**Barbara Groves - DeKalb, IL**  
**Ellen G Zimet - Laguna Woods, CA**  
**Nancy A Macomber - Arnold, CA**  
**Joan Clark - Irvine, CA**  
**Sharon Medler - Scotts Valley, CA**  
**Bindu Menon - Los Gatos, CA**  
**Susan L Sweet - Ukiah, CA**

## LAST 2023 WORKSHOP!

**Registration and online enrollment are on-going.**

2023 Workshops Details, Supply List & Artist Bio is listed under the Current Workshops tab.  
Enroll [HERE](#). For questions, email: [workshops@scvws.org](mailto:workshops@scvws.org)

Remember to log in first to receive member pricing (as shown) for the workshop.  
It's a fabulous savings and benefit to our members. All enrollment is conducted online.

**IF YOU WOULD LIKE THE OPPORTUNITY TO PARTICIPATE IN THE FINAL WORKSHOP OF THE YEAR, PLEASE SIGN UP RIGHT AWAY SO WE DON'T RISK HAVING TO CANCEL IT.**



**Instructor/Artist: CARRIE WALLER**

**"Realism in Watercolor: Painting Glass and Pattern"**

Workshop Dates: October 16-18 (3 days)

**\*\*IN PERSON\*\* MEMBER PRICE: \$429**

Instructor website: [www.carriewallerfineart.com](http://www.carriewallerfineart.com)

*Watercolor is a wonderfully versatile medium.  
There are seemingly an endless number of ways it can be handled.  
Its possibilities are limited only by the range of inventiveness  
and creativeness of the artist.*

Milford Zornes

## charging

*Charging is the addition of color to wet paint. It is also often referred to as "wet-into-wet" and "mixing on the paper." One of its charms is that at some point, it forces you to relinquish control of the process.*

TEXT CREDIT: KARENOLSENFINEART.COM



"SPRING MEMORIES" BY JEANNE HAINES



## 2024 WORKSHOPS

**We are happy to announce our 2024 workshop lineup!**  
**Registration and online enrollment began on September 1, 2023.**

This year we are mixing up our offerings to include both online and in-person workshops.

Free online Artist demos (without a subsequent workshop) will be offered in

June and August to current SCVWS members.

In addition, we have a special "Members Only" 2-day online live workshop with

David Lobenberg for a fee of \$20. How great is that?

**For more information about each workshop, see the Current Workshops tab on our website. [ENROLL HERE](#)**

### **Instructor/Artist: LYNN FERRIS**

"Capturing the Light"

Workshop Dates: January 22-24 (3 days)

Demo Date: January 21 (1:30 - 4:00 pm)

**\*\*IN-PERSON\*\* MEMBER PRICE: \$395**

Instructor website: [www.lynnferris.com](http://www.lynnferris.com)

### **Instructor/Artist: LAURIE GOLDSTEIN-WARREN**

"Easy Dynamic Pouring"

Workshop Dates: September 23-25 (3 days)

Demo Date: Sunday, September 15 (1:30 - 4:00 pm)

**\*\*ONLINE\*\* MEMBER PRICE: \$275**

Instructor website: [www.warrenwatercolors.com](http://www.warrenwatercolors.com)

### **Instructor/Artist: DAVID LOBENBERG**

Workshop Dates: February 10-11 (2 days)

Special "Members Only" Weekend Online Workshop

**\*\*ONLINE LIVE-STREAM\*\* MEMBER PRICE: \$20**

Instructor website: [www.lobenbergart.com](http://www.lobenbergart.com)

### **Instructor/Artist: ALEXIS LAVINE**

"Design for Success"

Workshop Dates: October 21-23 (3 days)

Demo Date: Sunday, October 20 (1:30 - 4:00 pm)

**\*\*ONLINE\*\* MEMBER PRICE: \$275**

Instructor website: [www.alexislavineartist.com](http://www.alexislavineartist.com)

### **Instructor/Artist: LORRAINE WATRY**

"Lillies and Glass Globes"

Workshop Dates: March 18-20 (3 days)

ONLINE Demo Date: Sunday, March 17 (1:30 - 4:00 pm)

**\*\*IN PERSON\*\* MEMBER PRICE: \$395**

Instructor website: [www.lorrainewatrystudio.com](http://www.lorrainewatrystudio.com)

### **Instructor/Artist: NANCY GRIGSBY**

"Expressing Your Artistic Inner Voice:

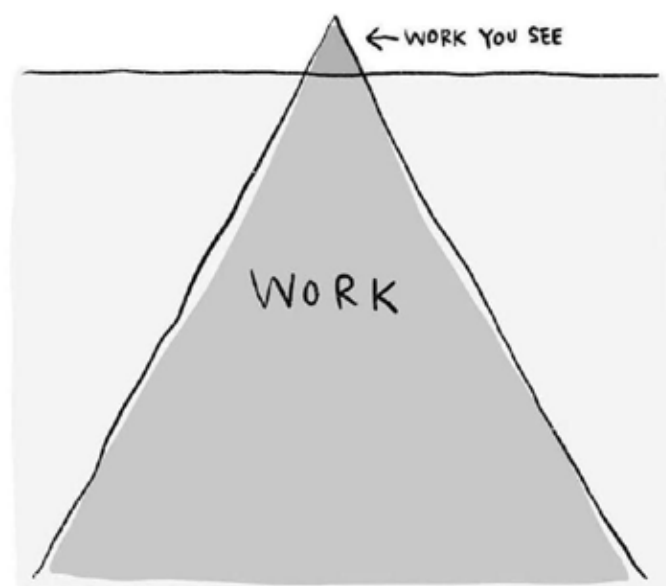
A Meaningful & Creative Journey in Mixed Media"

Workshop Dates: April 22-24 (3 days)

Demo Date: Sunday, April 21 (1:30 - 4:00 pm)

**\*\*IN PERSON\*\* MEMBER PRICE: \$350**

Instructor website: [www.nmgrigsbystudios.com](http://www.nmgrigsbystudios.com)



*The life of an artist.*

**QUESTIONS? Email [workshops@scvws.org](mailto:workshops@scvws.org)**



JOIN US FOR OUR LAST WORKSHOP OF 2023 &  
REGISTER AND RESERVE YOUR SPOT FOR 2024 WORKSHOPS!



## carrie waller

Realism in Watercolor:  
Painting Glass and Pattern

9.30 am - 3.00 pm PDT  
October 16-18, 2023 (3 days)  
at the Hoover Theater

Experienced Beginner & up  
Member Price: \$429  
Non-members: \$479

WEBSITE



Join master realist painter Carrie Waller as she walks you through her process of achieving successful, realistic paintings in watercolor.

- Carrie teaches her step-by-step approach breaking down complicated subjects and building practical strategies towards successful outcomes.
- She walks you through the entire process of her painting.
- Learn how to really "see" shapes and colors, and their relationships in the composition.

- This workshop is jam-packed with hints, tips, and insights from studio practices to painting techniques on achieving realism in watercolor.
- The environment is fun and approachable accommodating experienced beginners and more accomplished painters.

**Email [workshops](#) for more information.**

**NOTE: This is an IN-PERSON WORKSHOP at the Hoover Theater.**

**The online demo was on September 24 via Zoom and the recording can be accessed on [scvws.org](http://scvws.org).**

## What I learned in CAROLYN LORD's "Plein Air Rose Painting" Workshop



Carolyn is so knowledgeable and enthusiastic. She's very articulate and explains how to work with watercolor in a straightforward way.

**Kathy Park**

I learned how to simplify a landscape or still life with abstract, interesting shapes, using very light brush sketching to plan instead of pencil.

**Susan Butler-Graham, SCVWS Member  
& Exhibits Chair**

Simplify and work fast.

**May Yin Giang**



WATERCOLOR BY SUSAN BUTLER-GRAHAM



WATERCOLOR BY TANVI BUCH

How to modulate colors without changing them. How to use direct watercolor – no pencil lines. Sketching with a brush.

**Carol Evans, SCVWS Member**

I learned how to find a motif and to eliminate; how to start with the brightest, cleanest colors; blocking out shapes with a paintbrush; observing the various colors in a jungle of leaves based on the kind of light they receive.

**Tanvi Buch, SCVWS Member  
& Newsletter Editor**





### *"Vintage VW"*

PAINTED EN PLEIN AIR  
AT SUCCULENT GARDENS,  
CASTROVILLE, BY  
LAURIE BARNA

ALL SCVWS MEMBERS  
ARE INVITED TO  
**SUBMIT** A RECENT  
PLEIN-AIR PAINTING TO  
BE FEATURED IN THE  
MINI EXHIBIT OF THE  
MONTHLY NEWSLETTER.  
[NEWSLETTER@SCVWS.ORG](mailto:NEWSLETTER@SCVWS.ORG)

## mini exhibit

### *"Ruins in the Park"*

PAINTED EN PLEIN AIR AT  
SAN JOSE HISTORY PARK BY  
DICK ZUNKEL







"LIMITLESS POSSIBILITIES" BY PATRICIA LEWIS

**Patricia Lewis** was contacted by the Morgan Hill Library to do a commissioned painting for the children's section of the library. She successfully rose to the challenge and produced a 43" wide x 36" high work titled "Limitless Possibilities." It will be revealed in October during the Friends of the Library National Week.

## CANDY YU

### WATERCOLOR

Los Altos Library  
10/1/23 - 10/31/23



seescandyu@gmail.com FineArtAmerica.com/profiles/candy-yu EastValleyArtists.com/artists/#/candy-yu

**Candy Yu** is having a solo art exhibit at the Los Altos Library from October 1-31, 2023.

**Tanvi Buch** is having a solo watercolor exhibit at State Street Market, 170 State Street, Los Altos, from September 19 - October 31, 2023.



"BEDROOM WINDOW BLOOMS" BY TANVI BUCH

## member news



"CAPITOLA CLIFF" BY SUSAN BUTLER-GRAHAM

**Susan Butler-Graham** has been accepted into the 2023 Capitola Plein Air Annual Art Festival, which runs from October 30 - November 5. The Exhibition and Art Sale is on Sunday, November 5th, from 11 am - 4 pm at Jade Street Community Center, 4400 Jade Street. More info is at [capitolapleinair.com](http://capitolapleinair.com).



### Elaine Revell (1937-2023)

A long-time SCVWS member and former Thursday Paintsites leader, Elaine passed away peacefully with family by her side. See obituary [here](#).



## october

### **November Group Art Show (Kansas City, MO)**

[info](#)

Deadline: October 1, 2023

### **30x30 (Roseville, CA)**

[info](#)

Deadline: October 7, 2023

### **Natural Elements (Roseville, CA)**

[info](#)

Deadline: October 7, 2023

### **Small Works Exhibit 2023 (Key West, FL)**

[info](#)

Deadline: October 10, 2023

### **CWA 54th National Exhibition (online exhibition)**

[info](#)

Deadline: October 15, 2023

### **International Winter Art Show (Bryan, TX)**

[info](#)

Deadline: October 30, 2023

## november

### **December Group Art Show (Kansas City, MS)**

[info](#)

Deadline: November 1, 2023

### **2024 Arizona Aqueous XXXVIII (Tubac, AZ)**

[info](#)

Deadline: November 10, 2023

### **Renaissance II – New and Emerging Art (Hudson, NY)**

[info](#)

Deadline: November 11, 2023

### **Illuminating Perspectives:**

### **Exploring Light in Innovative Art (Sebastopol, CA)**

[info](#)

Deadline: November 17, 2023

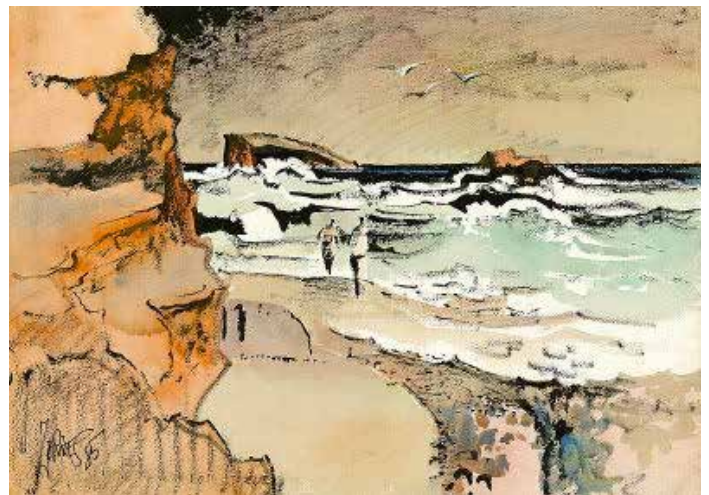
juried art shows

WHEN THE MOTIVES OF ARTISTS ARE PROFOUND,  
WHEN THEY ARE AT THEIR WORK AS A RESULT OF DEEP CONSIDERATION,  
WHEN THEY BELIEVE IN THE IMPORTANCE OF WHAT THEY ARE DOING,  
THEIR WORK CREATES A STIR IN THE WORLD.

ROBERT HENRI

who  
was the artist?

ANSWER ON [LAST PAGE](#)







GUGLIELMO WINERY PHOTO BY JANE SALTMAN

## PAINTSITES ARTWORK & SITE PHOTOS

### SCVWS Website Gallery

NEW: Paintsites Albums can be viewed by Paintsite, beginning June 2023.

### Paintsites Blog

Although discontinued in May 2022, earlier blog posts are still accessible and provide a good synopsis of previous Paintsites events. Use the search option on the sidebar.

### Private Facebook Group

To join, you must be a SCVWS member and have attended a Thursday Paintsite event. For details on joining the Paintsites FB Private Group and upcoming Paintsites, go [here](#).

## thursdaypaintsites



**Guglielmo Winery Morgan Hill**  
1480 E Main Avenue, Morgan Hill  
[map](#)

<https://tableagent.com/san-francisco/guglielmo-winery/>

<https://guglielmowinery.com/>

Guglielmo Winery has welcomed a return visit. This family operated winery has been in operation since 1925. Established by family patriarch, Emilio Guglielmo, (gool-yell-mo). Today the winemaking and daily operations remain in the hands of the third and fourth generation family members! In addition to Guglielmo's warm hospitality, this award-winning winery has a charming courtyard and panoramic views of the vineyard.

The tasting room is open 11 AM to 5 PM. If you would like to schedule wine tasting you are encouraged to schedule a reservation online in advance.

**Directions:** Take CA-85 S (11.2 mi). Merge onto US-101 S, go 8 mi, take exit 367 for Cochrane Rd. Go .5 mi. Go left on Cochrane Rd, go 0.5 miles and turn right. on Mission View Dr., go 0.6mi, turn right on Half Rd, 0.3mi, turns slightly left and becomes Condit Rd, 0.4mi. Turn left on E Main Ave, 0.4mi, then right on restricted usage road. Restrooms available.

### General Information:

The usual start time for Paintsites is flexible. Unless a different start time is announced, the organizers will be there from around 10 am. Since a couple of the sites are remote where mobile service may be absent, the coordinators may be unreachable, or GPS inaccurate, **please check instructions before heading out.** Often people stay until early afternoon, taking a packed lunch to eat at the site.

**Please note:** Should inclement weather or unforeseen events cause cancellation of an event, it will be announced on the "Thursday Paintsites" section of [scvws.org](http://scvws.org) by 8 AM on the day of the event. Cancellation will also be announced by email, but the timing of SCVWS Paintsite emails cannot be guaranteed.

This information is also available from the **Paintsites** details page on the **SCVWS website**, so you can easily retrieve it there.

**Jane Saltman**

[paintsites@scvws.org](mailto:paintsites@scvws.org)

**Alison Turner**

[paintsites@scvws.org](mailto:paintsites@scvws.org)

**Lora Cattell**

650-208-6662

THU  
12

**Queens Pumpkin Patch**  
12985 Saratoga Avenue, Saratoga  
[map](#)



<https://cunyfarms.com/pumpkin-patch/>

Join us at the Queens Pumpkin Patch in Saratoga. In addition to pumpkins, this urban farm has a petting zoo and Halloween decorations.

**Directions:** From Hwy 85, exit Saratoga Avenue. Located between Cox Ave and Hwy 85.

THU  
19

**Spina Farms**  
8820 Santa Teresa Blvd, San Jose  
[map](#)

<https://www.spinafarmspumpkinpatch.com/>

South County Pumpkin Farm Extravaganza! We are welcome to paint at Spina Farms located at the corner of Santa Teresa and Laguna, San Jose.

*"Get ready for a spectacular sight as you wander through thousands of Spina-grown pumpkins. You will find everything from your traditional orange pumpkin, to stripes, warts, colors, shapes, and sizes...just to name a few characteristics of our 25 varieties."*

**Directions:** From Hwy 101 South, exit Bailey Avenue, head west and turn left on Santa Theresa. Look for Entrance and Exit signs. Meet at entrance to patch.

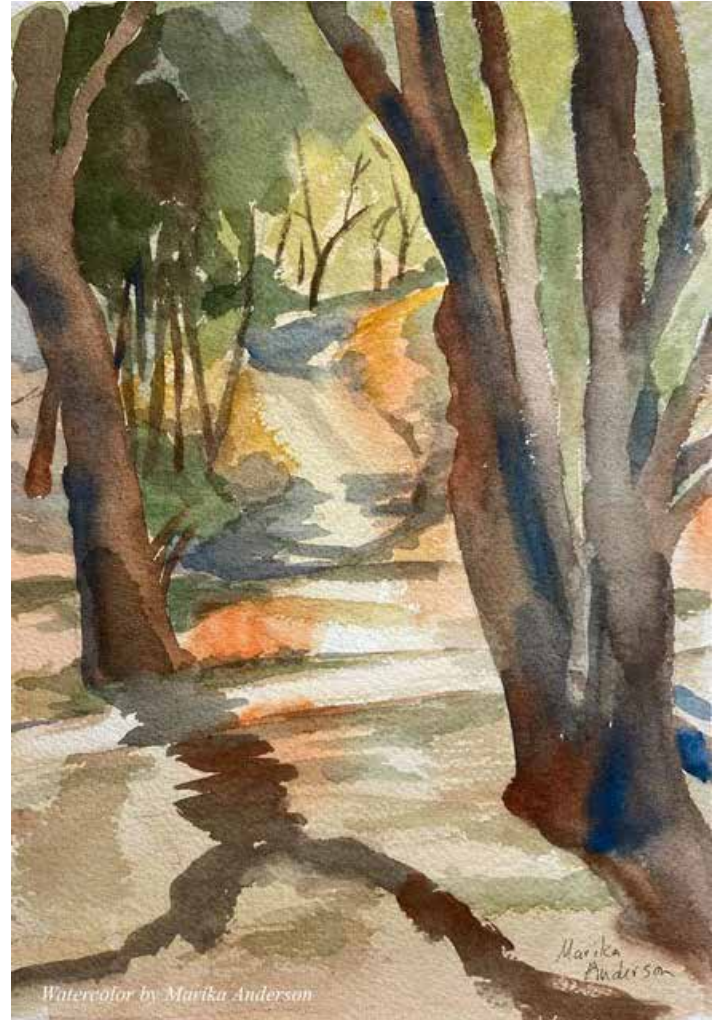
THU  
26

**Wunderlich Park**  
4040 Woodside Road, Woodside  
[map](#)

<https://parks.smcgov.org/wunderlich-park>

<https://parks.smcgov.org/folger-stable-historic-site>

Wunderlich Park is a hillside area of redwood forest, open meadows, and beautiful oaks and madrones that will hopefully have fall colors. This area was donated to the County by Martin Wunderlich. It contains what was once the Folger family ranch, and the estate stable and surrounding buildings have been restored to provide a historic treasure



WUNDERLICH COUNTY PARK BY MARIKA ANDERSON

to the community. Originally belonging to the Folger family (of Folgers Coffee fame), this estate was used as a country getaway. The Folger Estate site remains an enchanting example of the bygone great estates era. Fully renovated in 2010, the 1903 Folger property was designed by Arthur Brown, Jr., in partnership with Henry Schulze. Later in his career, Brown gained fame for his work on Coit Tower, the War Memorial Opera House, and City Hall in San Francisco. There are other buildings including a dairy house. In the rare chance that it is wet, we can sketch inside the Carriage Room Museum.

**Directions:** From Highway 280, exit Woodside Road (Highway 84) and turn westbound (towards Woodside). Proceed approximately 4 miles through the Town of Woodside approximately 1/2 mile past the intersection of Portola Road. The main park entrance on the right

LEARN HOW TO SEE. REALIZE THAT EVERYTHING CONNECTS TO EVERYTHING ELSE.

LEONARDO DA VINCI



# education



**Rafael DeSoto, Jr.**

**WATERCOLOR IMMERSIVE WORKSHOP**

**6 weeks: October 10 - November 14**

**Tuesday afternoons 2:00 - 4:30 pm**

University Art Classroom

2250 El Camino Real, Redwood City

Easy to follow lessons on how to paint watercolor landscapes, seascapes, still life and floral portraits. Beginning and experienced levels welcome. Early registration discount available.

**Information & Registration** [LINK](#)

Email: [desotostudio@gmail.com](mailto:desotostudio@gmail.com)

Phone: 408-483-3393

Website: <http://rafaeldesotojr.com>

SOME SUCCEED BECAUSE  
THEY ARE DESTINED TO,  
BUT MOST SUCCEED BECAUSE  
THEY ARE DETERMINED TO.

ANONYMOUS



**Rafael DeSoto, Jr.**

**SKIES, NO LIMIT!**

**Saturday, October 28.**

**11:00 am - 3:00 pm**

University Art Classroom

2250 El Camino Real, Redwood City

This watercolor class is back by popular demand! Lessons include how to paint cloud formations, fog, rain, and colorful sunsets. Students will be painting up a storm in no time! Beginning and experienced levels welcome.

**Information & Registration** [LINK](#)

Email: [desotostudio@gmail.com](mailto:desotostudio@gmail.com)

Phone: 408-483-3393

Website: <http://rafaeldesotojr.com>



# 12 ERRORS TO AVOID IN LANDSCAPE COMPOSITION

EXCERPTED FROM "BASIC NATURE PAINTING" EDITED BY **RACHEL RUBIN WOLF**

Dividing a composition into equal parts horizontally or vertically can lead to a static composition. Avoid horizontal lines that slice a painting in half, as well as trees, posts, masts of ships or other elements that dissect your composition vertically into equal parts.



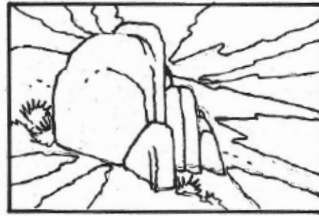
1



2

Dividing your design into too many similar shapes will produce an uninteresting painting. Likewise, be sure the spaces between objects aren't all the same width or height.

Don't include so many tension-creating shapes that the composition becomes busy or irritating, unless that is your intention.



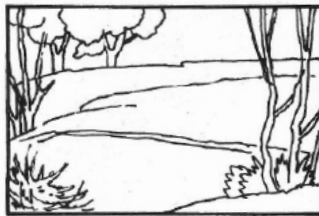
3



4

When using converging lines, be careful you aren't "kidnapping" the viewer's eye and preventing it from moving through the painting.

Placing interesting shapes or elements at the edge of the composition steals attention from the center of interest.



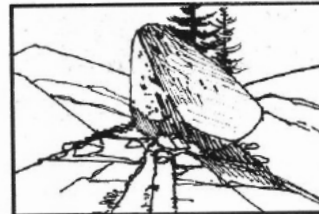
5



6

Perfectly-shaped triangles in the corners of your composition can draw the viewer's attention away from the center of interest. If triangles are unavoidable, soften the edges or stagger the forms.

Avoid "visual traps" - lines, values, or shapes that meet at the same point (such as a tree, a road, and the horizon). If your composition includes an element with a strong perspective, such as a road, it's usually best not to show where the converging lines of perspective meet; otherwise, the viewer's eye is likely to follow the perspective path to a visual dead end at the vanishing point.



7



8

Be careful not to change technique in the middle of a painting. If you've begun a scene using mostly tonal changes (value against value), adding an outlined line drawing (such as the boat in this example) will almost certainly look "out of key" with the rest of the painting.

Be aware of static shapes. Here, for example, the dark, opened doorway creates a static shape that becomes a visual trap. It's better to modify it with a graded tone or a cool-to-warm transition.



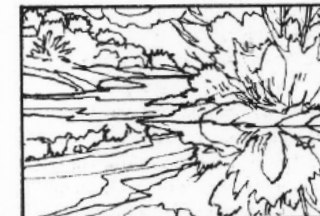
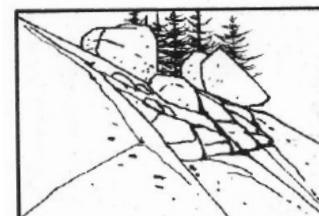
9



10

Cast shadows can be effective as design shapes, but if they are too dark and sharp-edged, they can easily become "visual holes." If, for example, the shadow of a tree falls across vegetation and rocks, exercise a little artistic license and lighten it to allow the rocks and vegetation to be seen more clearly.

Watch for edges of planes or lines that lead to the corners of your composition.



When laying in your initial washes, block in the largest shapes first. Defining smaller shapes too early can fragment the image and make it difficult to create visual unity.

James Milford Zornes was an American watercolor artist and teacher who was known to be part of the California Scene Painting movement. [read more](#)



*"From the Cove - Laguna" (1985)*  
**Milford Zornes (1908-2008)**